



Listing Number: 750

SALE PRICE
USD \$136,600

Land Area: 11,380 sq. ft

Amenities & Property Features

- Amenities Nearby
- Flat Lot
- Near Beach
- South Coast
- Underground Utilities
- Walking Distance To The Beach

Description:

Bow Bells is an exclusive development located on a ridge adjacent to the South Point Lighthouse in the parish of Christ Church in the south of the island approximately 300 yards from the sea. This mature residential community boasts beautiful views along the coast to the ocean. Lot #10 is 11,380 sq. ft.

This community offers 25 lots with all the services run underground. There are covenants in place to protect the quality of the development. All the services run underground.

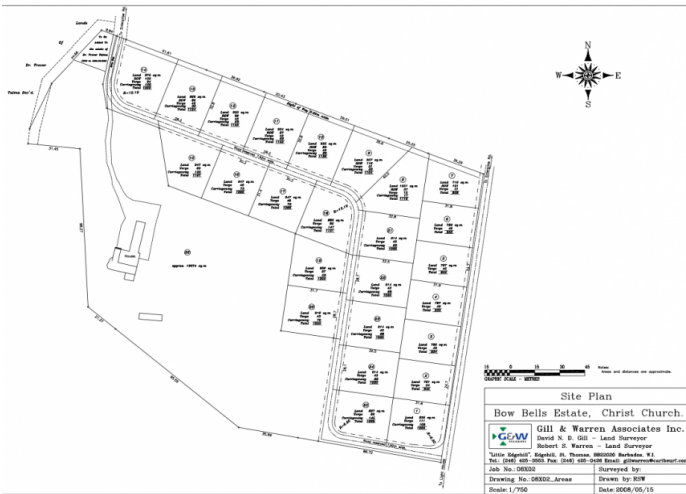
Located within walking distance to the ocean and less than 1km away from Silver Sands, Miami Beach and Oistins and a 5-10 minute drive to the Barbados Golf Club and Grantley Adams international Airport.

The information provided on this property is deemed reliable, however, not guaranteed.



WE MANAGE

Island Life . Barbados



WE MANAGE

Island Life . Barbados



@WEMANAGEBARBADOS



+1 (246) 266-2900



Contact Us at wemanagebarbados@gmail.com