



Listing Number: 749

**SALE PRICE**  
USD \$142,600

Land Area: 11,885 sq. ft

## Amenities & Property Features

- Amenities Nearby
- Flat Lot
- Near Beach
- South Coast
- Underground Utilities

**Description:**

Bow Bells is an exclusive development located on a ridge adjacent to the South Point Lighthouse in the parish of Christ Church in the south of the island approximately 300 yards from the sea. This mature residential community boasts beautiful views along the coast to the ocean. Lot #9 is 11,885 sq. ft.

This community offers 25 lots with all the services run underground. There are covenants in place to protect the quality of the development.

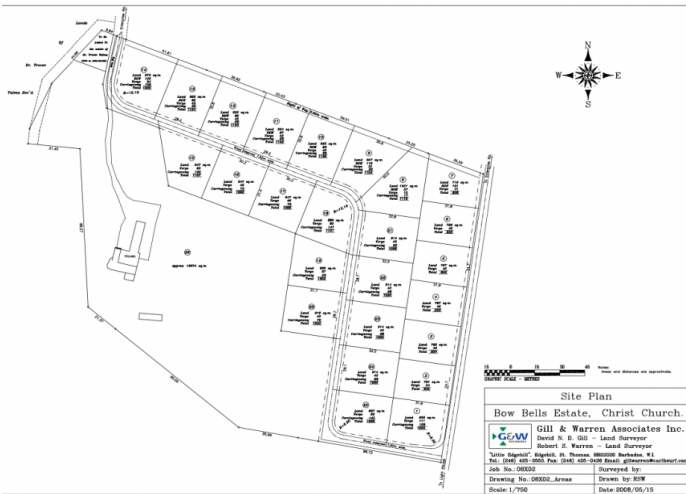
Located within walking distance to the ocean and less than 1km away from Silver Sands, Miami Beach and Oistins and a 5-10 minute drive to the Barbados Golf Club and Grantley Adams international Airport.

*The information provided on this property is deemed reliable, however, not guaranteed.*



# WE MANAGE

*Island Life . Barbados*



# WE MANAGE

*Island Life . Barbados*



@WEMANAGEBARBADOS



+1 (246) 266-2900



Contact Us at [wemanagebarbados@gmail.com](mailto:wemanagebarbados@gmail.com)